

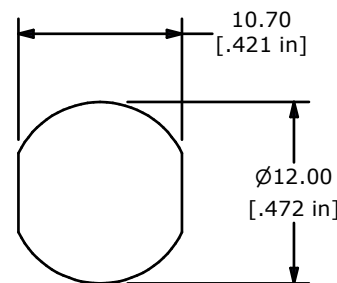
NOTES:

1. ALL DIMENSIONS IN MM[INCH]
2. GENERAL TOLERANCE: x.x= ± 0.4  
x.xx= ± 0.25
3. TERM. NOS. FOR REFERENCE ONLY.
4. RATING: 1A @125VAC, 0.5A @250VAC
5. CONTACT RESISTANCE: 20mΩ MAX.
6. DIELECTRIC STRENGTH: 1,500 V @SEA LEVEL

▲7. MATERIALS:

HOUSING: ZINC ALLOY W/CHROME PLATING  
CYLINDER: ZINC ALLOY W/CHROME PLATING  
TERMINAL AND CONTACTS: SILVER PLATED  
KEYS (2) KEY CODE 1001: STEEL, NICKEL PLATING

8. ▲ DENOTES CRITICAL PARAMETER.
9. 2002/95/EC (ROHS) COMPLIANT



RECOMENDED PANEL CUTOUT

CIRCUIT: SPDT  
CONTACT CONFIGURATION  
90° INDEXING

| SWITCH FUNCTION |       |
|-----------------|-------|
| POS 1           | POS 2 |
| ↑               | →     |
| OFF             | ON    |

LEGEND

● = INDICATES KEY PULL POSSIBLE



TITLE KO105C1001

|     |        |                 |         |     |
|-----|--------|-----------------|---------|-----|
| A   | 21417  | INITIAL RELEASE | 3/28/14 | EBP |
| REV | PCR NO | DESCRIPTION     | DATE    | BY  |

THE INFORMATION CONTAINED IN THIS DOCUMENT IS PROPRIETARY TO E-SWITCH AND IS NOT TO BE COPIED OR TRANSFERRED

|       |                   |           |                |          |
|-------|-------------------|-----------|----------------|----------|
| SCALE | DATE<br>3/28/2014 | DR<br>EBP | DWG<br>K100310 | REV<br>A |
|-------|-------------------|-----------|----------------|----------|